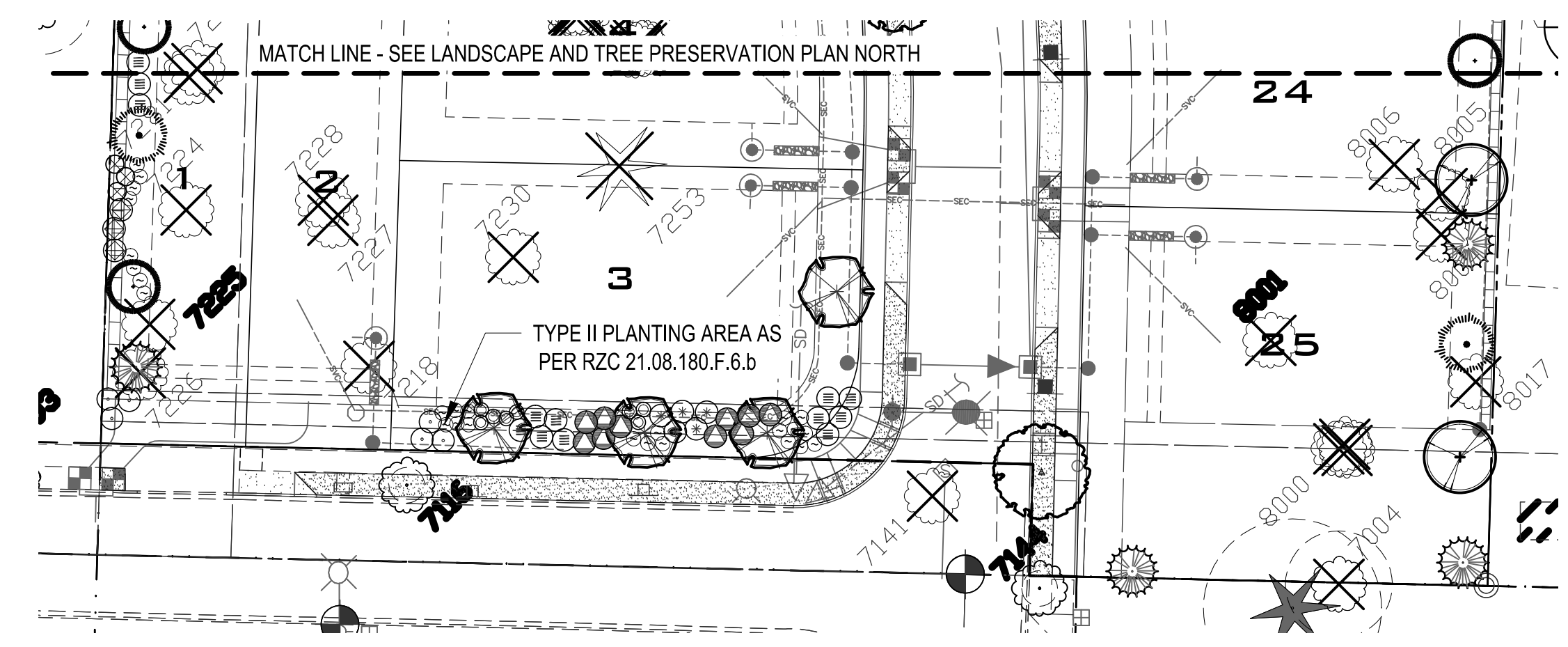


① LANDSCAPE AND TREE PRESERVATION PLAN - NORTH
SCALE: 1" = 30'-0"



0' 15' 30'
SCALE: 1" = 30'-0"

② LANDSCAPE AND TREE PRESERVATION PLAN - SOUTH
SCALE: 1" = 30'-0"



② LANDSCAPE AND TREE PRESERVATION PLAN - SOUTH
SCALE: 1" = 30'-0"

TREE PRESERVATION SUMMARY TABLE

TYPE OF TREE (DBH)	QUANTITY OF TREES			TOTAL
	REMOVED	IMPACTED	RETAINED	
LANDMARK (>30")	1	0	2	3
Replacement ratio:	3:1			
SIGNIFICANT (>6", <30")	62		35	97
Replacement ratio:	1:1/3:1 for trees beyond 65% total trees			
NOTES:	No more than 65% of healthy Landmark + Significant Trees may be removed, unless approved by an exception. If approved, then mitigation is required, i.e. replacement trees, at a ratio of 3:1 if exception is approved. Tree Replacement Performance Bond required for each replacement tree. 3 year maintenance bond required after performance.			
	3-year Tree Replacement Performance Bond required for each Retained Tree. The bond is used if an impacted tree dies and the applicant does not replace it.			
	5-year Tree Preservation Bond is required for each Retained Tree. The bond is used if an impacted tree dies and the applicant does not replace it.			

SIGNIFICANT TREE DATA

DOES NOT INCLUDE LANDMARK TREES

REDMOND MUNICIPAL CODE (21.72.080 TREE REPLACEMENT)	TOTAL TREES
TOTAL SIGNIFICANT TREES ON PROPERTY	100
TOTAL SIGNIFICANT TREES TO BE REMOVED	63
TOTAL SIGNIFICANT TREES TO BE RETAINED	37

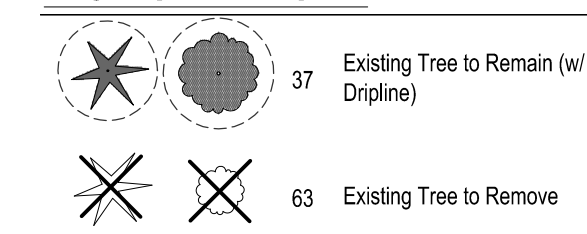
LANDMARK TREE DATA

REDMOND MUNICIPAL CODE (21.72.080 TREE REPLACEMENT)	TOTAL TREES
TOTAL LANDMARK TREES ON PROPERTY	3
LANDMARK TREES TO BE REMOVED	1
LANDMARK TREES TO BE IMPACTED	0
LANDMARK TREES TO BE RETAINED	2

TREE REPLACEMENT DATA

REDMOND MUNICIPAL CODE (21.72.080 TREE REPLACEMENT)	REPLACEMENT TREES REQ'D
SIGNIFICANT TREES REPLACED @ 1:1 RATIO (65% OF TOTAL SIGNIFICANT TREES: 202 X 0.65 = 131)	63
SIGNIFICANT TREES REPLACED @ 3:1 RATIO (TREES IN EXCESS OF 65%: 149 - 131 = 18 X 3)	0
LANDMARK TREES REPLACED @ 3:1 RATIO (6 X 3)	3
TOTAL REPLACEMENT TREES REQUIRED	66

EXISTING TREE LEGEND



SEE SHEET L1.03 FOR COMPLETE PLANT LEGEND

NOTES

- REPLACEMENT TREES SHOWN IN BUFFER AREA MAY BE FIELD ADJUSTED FOR BEST FIT WITH EXISTING VEGETATION.
- EXISTING TREES TO BE PROTECTED DURING CONSTRUCTION PER CITY OF REDMOND STANDARDS AND AS DIRECTED. REFER TO 1/L1.03 AND CIVIL PLANS.
- REFER TO SHEET L1.02 FOR DETAILED TREE INVENTORY.
- REFER TO SHEET L1.03 FOR PLANTING DETAILS.

GREEN BUILDING AND GREEN INFRASTRUCTURE INCENTIVE PROGRAM NOTE:
THE PROJECT CLAIMS 2 INCENTIVE POINTS FOR PRESERVING 30% OF THE SITE AS NATURAL VEGETATION (99,793 SF OF THE TOTAL 300,102 SF SITE AREA WILL REMAIN UNDISTURBED), AND 1 INCENTIVE POINT FOR DROUGHT TOLERANT LANDSCAPING. THE PROJECT APPLIES 3 INCENTIVE POINTS TO QUALIFY FOR 25% LOT SIZE REDUCTION PER COP TABLE 21.64.040B, REDUCING THE MINIMUM AVERAGE LOT SIZE FROM 7,000 SF (R4) TO 5,250 SF.

CITY OF REDMOND ECOLOGICAL SCORE

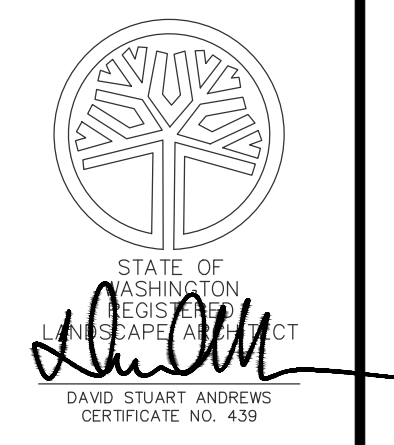
TECHNIQUE	POINTS
#1-PLANT MATERIAL IS MADE UP OF 25% ADAPTIVE AND 25% NATIVE PLANTS	5
#3-25% OF PROPOSED TREES ARE EVERGREEN. 5 POINTS +1 FOR EACH ADDITIONAL 2.5% BY WHICH THE EVERGREEN TREES EXCEED 25% (MAX. 10 POINTS) - 132/230 = 57% OF 230 PROPOSED TREES ARE EVERGREEN, WHICH EXCEEDS THE 25% THRESHOLD BY 32%. +1 POINT FOR EACH 2.5% EVERGREEN TREES TO A MAX. OF +10.	10
#10-MINIMUM OF 25% OF LANDSCAPED AREAS ARE DESIGNED WITH LANDSCAPING THAT DOES NOT REQUIRE IRRIGATION AFTER A THREE-YEAR PERIOD	5
TOTAL	20

TREE PROTECTION MEASURES

RZC 21.72.070
A. Tree Protection Measures. To ensure long-term viability of trees and stands identified for protection, permit plans, and construction activities shall comply with the following minimum required tree protection:

- All minimum required tree protection measures shall be shown on the tree protection and replacement plan.
- All construction activities, including staging and traffic areas, shall be prohibited within five feet of the drip line of protected trees.
- Tree protection barriers shall be installed five feet beyond the drip line of significant trees to be protected prior to any land disturbance.
- Tree protection barriers shall be a minimum of four feet high, constructed of chain link, or polyethylene laminar safety fencing or similar material, subject to approval by the Administrator. On large or multiple-project sites, the Administrator may also require that signs requesting subcontractor cooperation and compliance with tree protection standards be posted at site entrances.
- Where tree protection areas are remote from areas of land disturbance, and where approved by the Administrator, alternative forms of tree protection may be used in lieu of tree protection barriers, provided that protected trees are completely surrounded with continuous rope or flagging and are accompanied by "Tree Save Area - Keep Out" signs.

DATE	REVISION	BY	CK. NO.
7/21/14	PRELIMINARY PLAT SUBMITTAL		
9/18/14	PLAT SUBMITTAL		
12/16/14	PREP COMMENTS		
5/18/15	RESUBMITTAL		



EDGEWOOD EAST
REDMOND, WA

CLIENT
QUADRANT HOMES
QUADRANT HOMES, INC.
14725 SE 36TH STREET
SUITE #100
PO BOX 130
BELLEVUE, WA 98009



PROJECT NO.
SHEET TITLE
DRAWING
L1.01
SHEET 1 OF 6

Table 1: Tree Inventory Data (Page 1)

Table 2: Tree Inventory Data (Page 2)

Table 3: Tree Inventory Data (Page 3)

Table 4: Tree Inventory Data (Page 4)

Table 5: Tree Inventory Data (Page 5)

Table 6: Tree Inventory Data (Page 6)

Table 7: Tree Inventory Data (Page 7)

Table 8: Tree Inventory Data (Page 8)

DATE REVISION BY OK NO. 7/21/14 PRELIMINARY PLAT SUBMITTAL 9/18/14 PLAT SUBMITTAL 12/16/14 PREP COMMENTS 5/18/15 RESUBMITTAL



EDGEWOOD EAST REDMOND, WA

CLIENT



QUADRANT HOMES, INC. 14725 SE 36TH STREET SUITE #100 PO BOX 130 BELLEVUE, WA 98009



PROJECT NO.

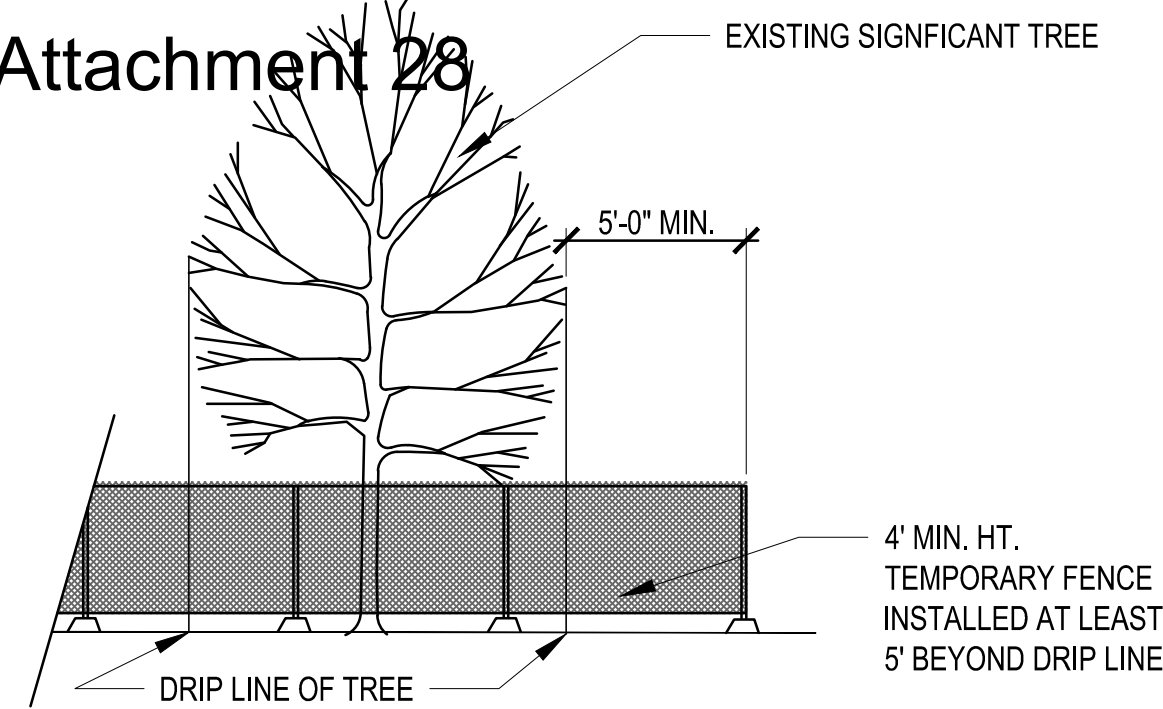
SHEET TITLE

DRAWING

L1.02

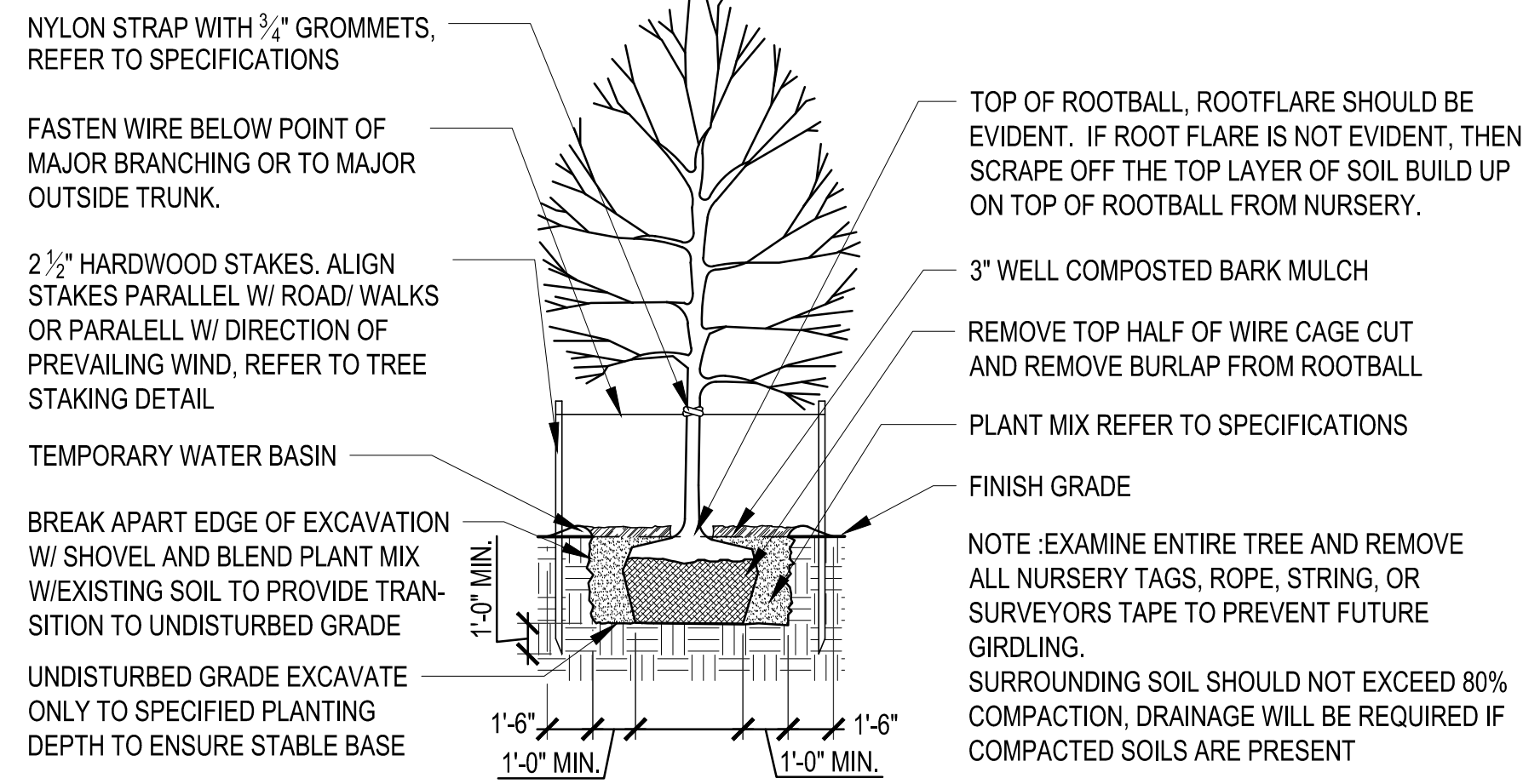
SHEET 2 OF 6

Attachment 28

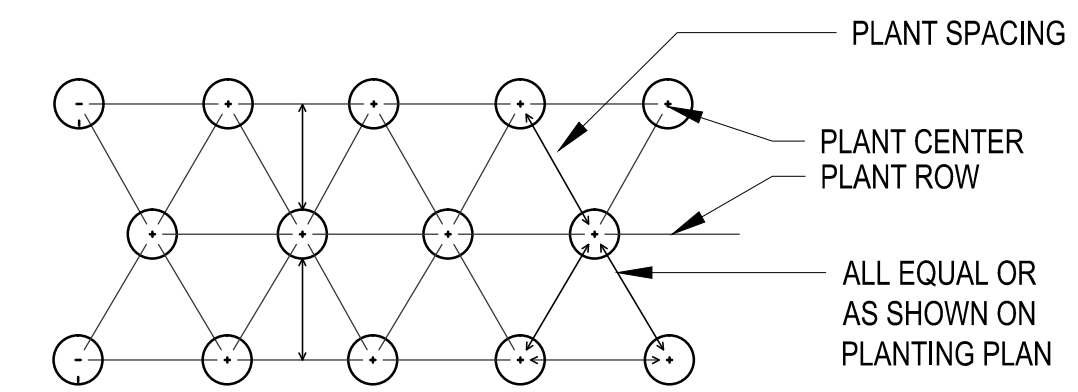


1. MINIMUM 4' HT. TEMPORARY FENCE SHALL BE PLACED AT THE DESIGNATED LIMITS OF DISTURBANCE OF THE TREE TO BE SAVED. FENCING SHALL COMPLETELY ENCIRCLE TREE(S). AVOID DRIVING FENCE POSTS OR STAKES INTO ROOTS.
2. TREATMENT OF ROOTS EXPOSED DURING CONSTRUCTION. FOR ROOTS OVER (1) ONE INCH DIAMETER DAMAGED DURING CONSTRUCTION; MAKE A CLEAN STRAIGHT CUT TO REMOVE THE DAMAGED PORTION OF THE ROOT. ALL EXPOSED ROOTS SHALL BE TEMPORARILY COVERED WITH DAMP BURLAP TO PREVENT DRYING AND COVERED WITH SOIL AS SOON AS POSSIBLE.
3. NO STOCKPILING OF MATERIALS, VEHICULAR TRAFFIC, OR STORAGE OF EQUIPMENT OR MACHINERY SHALL BE ALLOWED WITHIN THE LIMIT OF THE FENCING. FENCING SHALL NOT BE MOVED OR REMOVED UNLESS APPROVED BY THE RESPONSIBLE OFFICIAL GOVERNING THE WORK. WORK WITHIN THE PROTECTION FENCE SHALL BE DONE MANUALLY.

1 TREE PROTECTION DETAIL
NTS

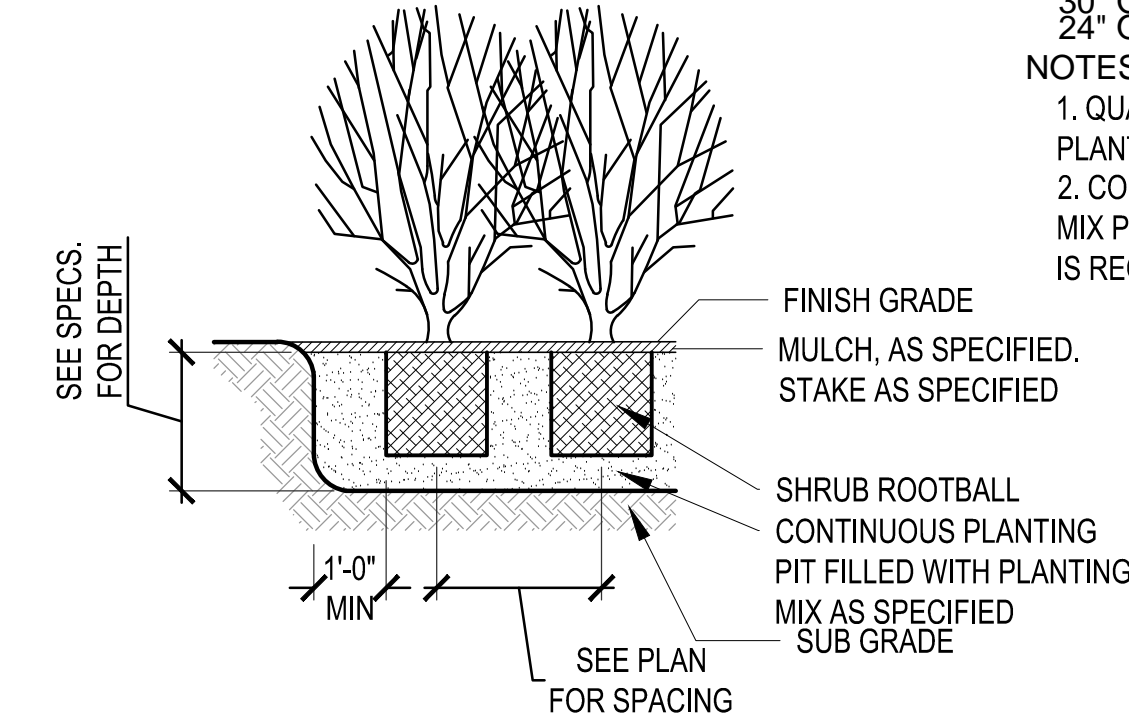


2 TREE PLANTING - DECIDUOUS
NTS

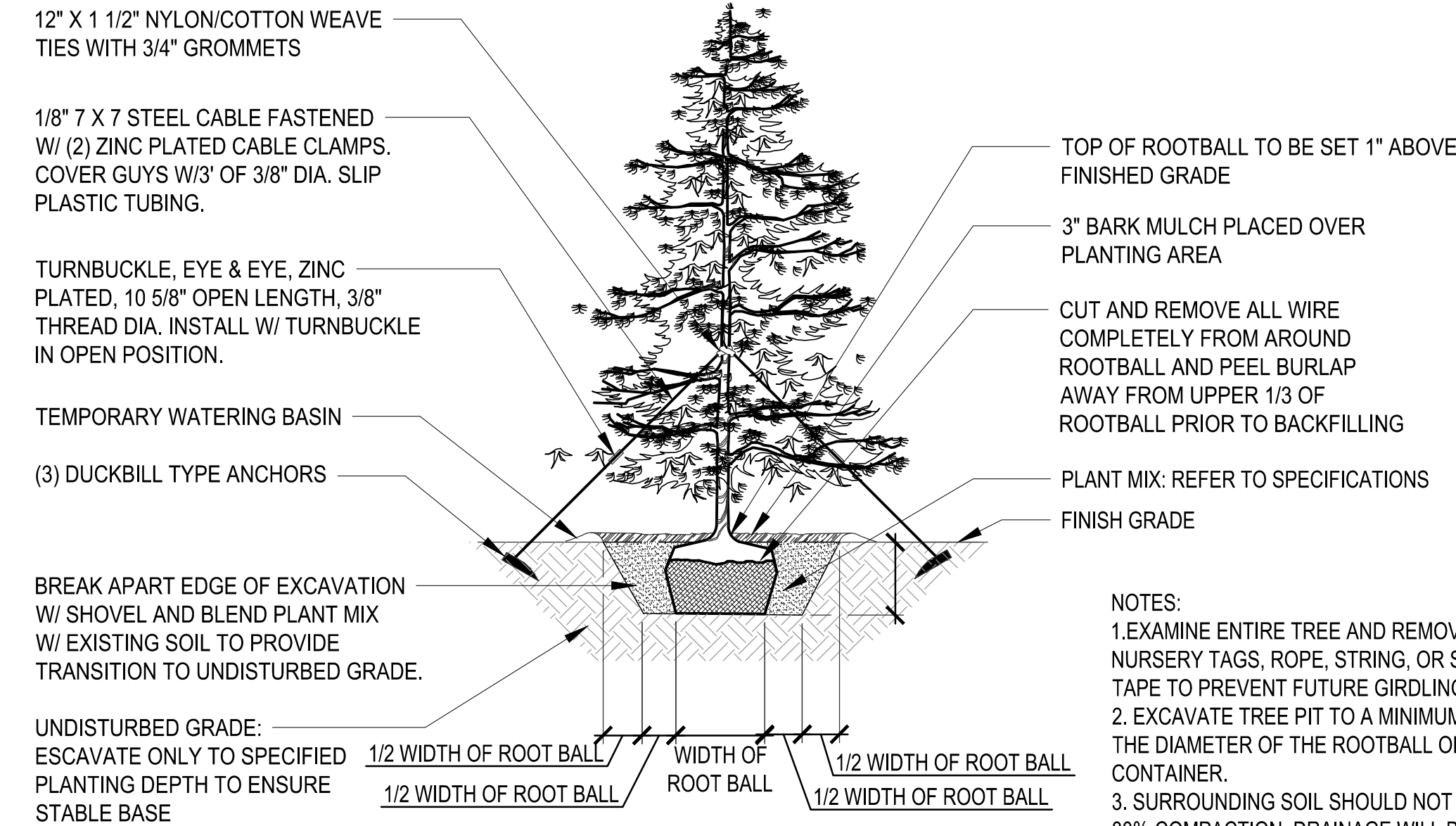


SPACING "D"	ROW "A"	NUMBER OF PLANTS/SQ. FT.
5' O.C.	51.96"	0.04
4' O.C.	41.52"	0.07
36" O.C.	31.20"	0.12
30" O.C.	26.00"	0.12
24" O.C.	20.76"	0.28

- NOTES:
1. QUANTITY OF SHRUBS AND SPACING AS NOTED IN PLANTING SCHEDULE.
 2. CONTINUOUS PLANTING PITS FILLED WITH PLANTING MIX PER THE DEPTH AS NOTED IN THE SPECIFICATIONS IS REQUIRED.



3 SHRUB AND GROUNDCOVER PLANTING
NTS



3 TREE PLANTING - EVERGREEN
NTS

PLANTING NOTES

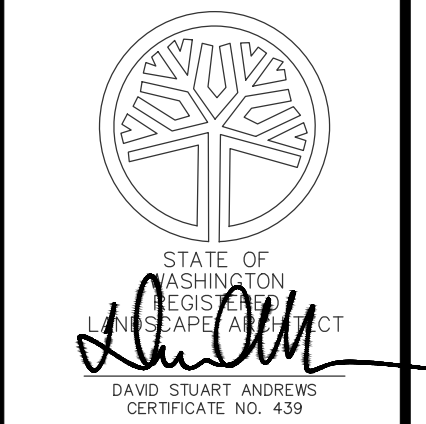
1. ALL PLANT MATERIAL SHALL CONFORM TO CITY OF REDMOND STANDARDS FOR SIZE AND SPACING, AND SHALL BE INSTALLED PER THE CONTRACT DOCUMENTS AND SPECIFICATIONS.
2. THE LANDSCAPE CONTRACTOR SHALL BE RESPONSIBLE FOR PRO ACTIVELY COORDINATING WITH THE GENERAL CONTRACTOR AND OTHER SUB CONTRACTORS AS REQUIRED TO PROPERLY ACCOMPLISH THE LANDSCAPE INSTALLATION.
3. THE LANDSCAPE CONTRACTOR IS RESPONSIBLE TO LOCATE ALL UNDERGROUND UTILITIES PRIOR TO STARTING WORK.
4. NO PLANT MATERIAL INSTALLATION SHALL OCCUR BEFORE SOIL AMENDMENT, TOPSOIL PLACEMENT AND FINE GRADING HAS BEEN COMPLETED AND REVIEWED BY THE LANDSCAPE ARCHITECT. PROVIDE TOPSOIL TO DEPTH SPECIFIED.
5. ALL PLANT MATERIAL SHALL CONFORM TO THE GUIDELINES ESTABLISHED BY THE CURRENT AMERICAN STANDARDS FOR NURSERY STOCK, PUBLISHED BY THE AMERICAN ASSOCIATION OF NURSERYMEN. ALL TREES AND SHRUBS OF THE SAME SPECIES AND SIZE SHALL HAVE MATCHING HEIGHT AND FORM UNLESS OTHERWISE NOTED ON THE PLANS.
6. ALL PLANTING AREAS SHALL BE CAPPED WITH A MINIMUM 3 INCH DEPTH OF ORGANIC BARK MULCH AFTER PLANTING IS COMPLETED.
7. LANDSCAPE DEPICTED ON THESE DRAWINGS REPRESENTS NEW WORK OR EXISTING AREAS IMPACTED BY NEW CONSTRUCTION. EXTENSIVE PREVIOUSLY LANDSCAPED AREAS EXIST WHICH ARE NOT SHOWN ON THE PLANS. CONTRACTOR SHALL PROTECT ALL EXISTING LANDSCAPE AND IRRIGATION IN THE COURSE OF THE WORK. REPAIR AND REPLACE ALL AREAS DAMAGED BY NEW CONSTRUCTION.
8. REFER TO PROJECT SPECIFICATIONS FOR ADDITIONAL INFORMATION.
9. TOPSOIL SHALL MEET THE MINIMUM REQUIREMENTS OF DOE SMMVVV BMP TS.13; *POST CONSTRUCTION SOIL QUALITY AND DEPTH*. TOPSOIL SHALL BE IMPORTED TO A DEPTH OF 8" IMPORTED TOPSOIL SHALL HAVE A MINIMUM ORGANIC MATTER CONTENT OF 5% IN TURF AREAS AND 10% IN PLANT BEDS. TOPSOIL PH SHALL BE FROM 6.0 TO 8.0. SUBGRADES SHALL BE SCARIFIED TO AT LEAST 4" DEPTH PRIOR TO TOPSOIL PLACEMENT. COMPOST USED IN TOPSOIL AMENDMENT SHALL MEET WAC 173-350-220.
10. A MINIMUM OF 25% OF LANDSCAPED AREA WILL BE DESIGNED TO FUNCTION WITHOUT IRRIGATION.

PLANT LEGEND

SYMBOL (NON-REPLACEMENT TREES)	SYMBOL (REPLACEMENT TREES)	QTY.	BOTANICAL NAME	COMMON NAME	QUANTITY*	NATIVE PLANT	NW ADAP-TIVE	DROUGHT TOLERANT	SIZE
		37	Existing Tree to Remain (w/ Dripline)						
		63	Existing Tree to Remove						
DECIDUOUS TREES									
			<i>Acer rubrum</i>	Red Maple	11		X	X	2 1/2" cal. min.
			<i>Acer macrophyllum</i>	Big Leaf Maple	3	X		X	2 1/2" cal. min.
			<i>Cornus Kousa</i>	Kousa Dogwood	4 non-repl.		X	X	2 1/2" cal. min.
			<i>Crataegus viridis 'Winter King'</i>	Winter King hawthorne	2 repl./ 7 non-repl.	X		X	2 1/2" cal. min.
			<i>Quercus rubra</i>	Red Oak	11				2 1/2" cal. min.
EVERGREEN TREES									
			<i>Picea sitchensis</i>	Sitka Spruce	4	X		X	6' ht. min.
			<i>Pseudotsuga menziesii</i>	Douglas Fir	23	X		X	6' ht. min.
			<i>Thuja plicata 'Excelsa'</i>	Western Redcedar	11	X		X	6' ht. min.
			<i>Pinus contorta</i>	Shore Pine	7		X	X	6' ht. min.
TALL SHRUBS									
			<i>Holodiscus discolor</i>	Ocean Spray	91	X		X	30' ht. & 2 gal cont. Min.
			<i>Lonicera involucrata</i>	Twinberry	120	X		X	30' ht. & 2 gal cont. Min.
			<i>Myrica californica</i>	California Wax Myrtle	51		X	X	30' ht. & 2 gal cont. Min.
			<i>Osmanthus Delavayi</i>	Osmanthus	35		X	X	30' ht. & 2 gal cont. Min.
			<i>Ribes aureum</i>	Golden Currant	17	X		X	30' ht. & 2 gal cont. Min.
			<i>Viburnum plicatum 'Tomentosum'</i>	Doublefile Viburnum	57		X	X	30' ht. & 2 gal cont. Min.
MEDIUM SHRUBS									
			<i>Gaultheria shallon</i>	Salal	45	X		X	24" ht. & 2 gal cont. Min.
			<i>Mahonia aquifolium</i>	Oregon Grape	107	X		X	24" ht. & 2 gal cont. Min.
			<i>Rosa nutkana</i>	Nootka Rose	31	X		X	24" ht. & 2 gal cont. Min.
			<i>Vaccinium parviflorum</i>	Red Huckleberry	114	X		X	24" ht. & 2 gal cont. Min.
GROUNDCOVER									
			<i>Arctostaphylos uva ursi</i>	Kinnikinnick		X		X	1 gal. spaced 18" o.c.
SEEDED LAWN									

* Unless otherwise noted, all tree quantities refer to replacement trees.

DATE	REVISION	BY	CHK. NO.
7/21/14	PRELIMINARY PLAT SUBMITTAL		
9/18/14	PLAT SUBMITTAL		
12/16/14	PREP COMMENTS		
5/18/15	RESUBMITTAL		

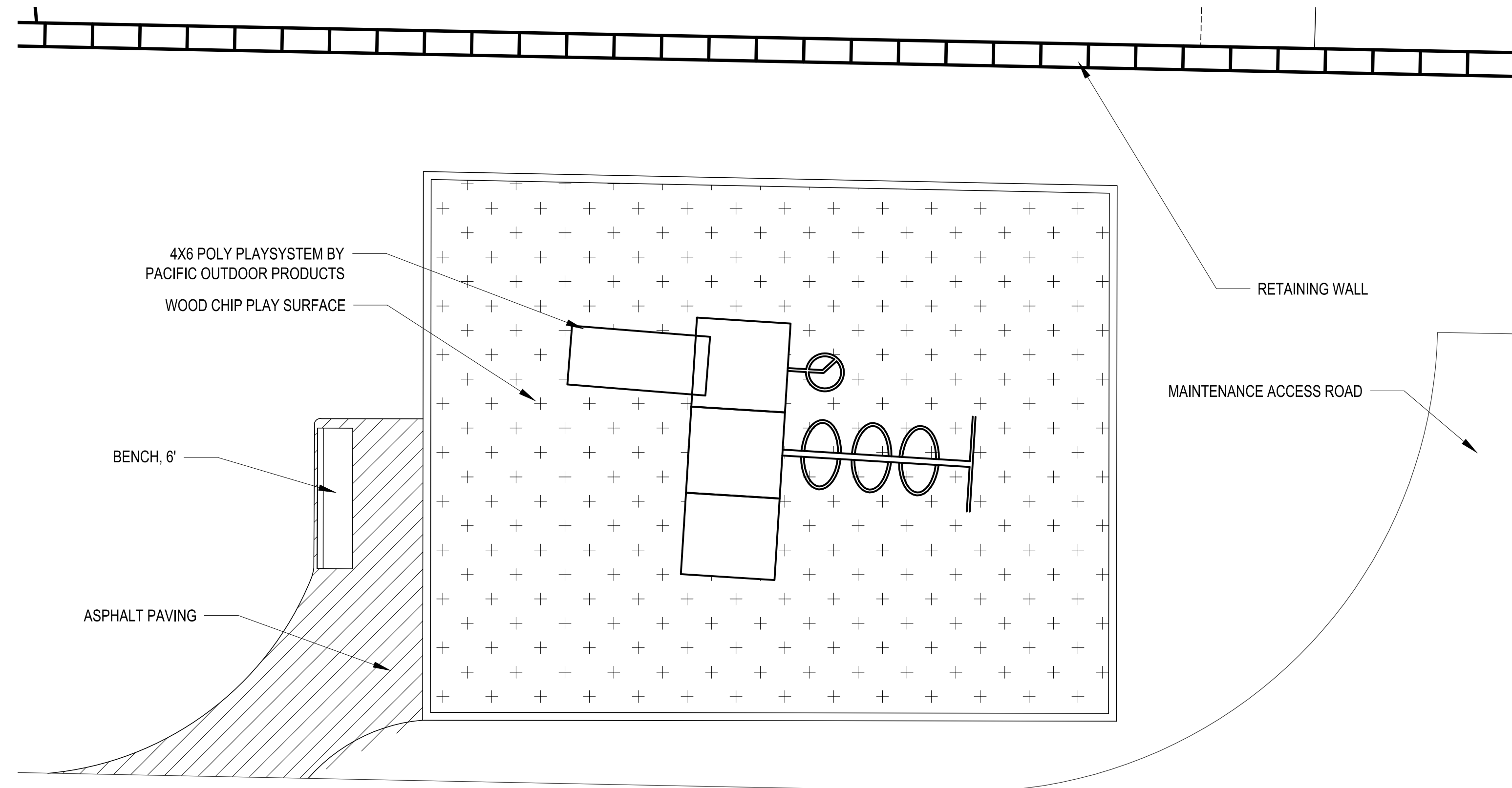


EDGEWOOD EAST
REDMOND, WA

CLIENT
QUADRANT HOMES
QUADRANT HOMES, INC.
14725 SE 36TH STREET
SUITE #100
PO BOX 130
BELLEVUE, WA 98009

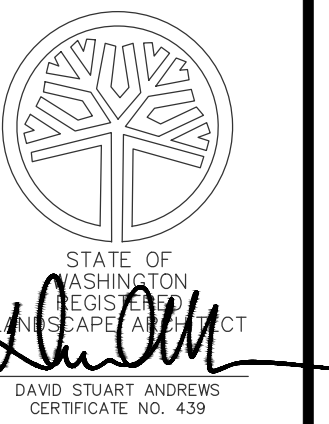


PROJECT NO.
SHEET TITLE
DRAWING
L1.03
SHEET 3 OF 6



1 PLAY AREA - ENLARGED PLAN
SCALE: 1/4" = 1'-0"

DATE	REVISION	BY	CHK. NO.
7/21/14	PRELIMINARY PLAT SUBMITTAL		
9/18/14	PLAT SUBMITTAL		
12/16/14	PREP COMMENTS		
5/18/15	RESUBMITTAL		

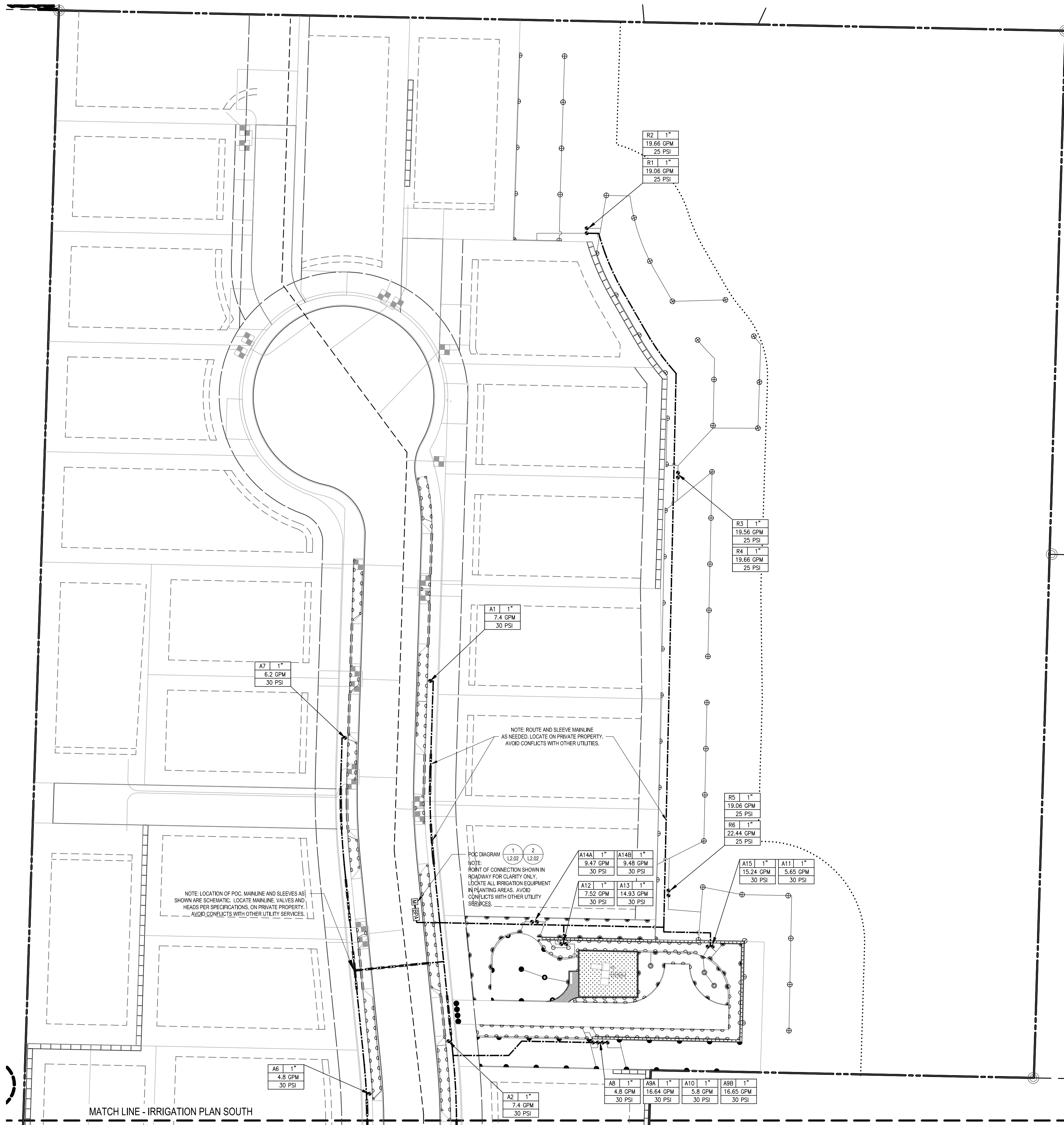


EDGEWOOD EAST
REDMOND, WA

CLIENT
QUADRANT HOMES
QUADRANT HOMES, INC.
14725 SE 36TH STREET
SUITE #100
PO BOX 130
BELLEVUE, WA 98009



PROJECT NO.
SHEET TITLE
DRAWING
L1.04
SHEET 4 OF 6



1 IRRIGATION PLAN - NORTH
SCALE: 1" = 30'-0"



0' 15' 30'
SCALE: 1" = 30'-0"

SYMBOL				ITEM	DESCRIPTION	NOTES
Q	H	TQ	F			
○	○	○	○	SPRAY HEAD	RAINBIRD 1800-SAM-PRS POP-UP WITH MRP NOZZLE, 5 SERIES	4" POP-UP AT LAWNS; 6" POP-UP AT SHRUB AREAS
○	○	○	○	SPRAY HEAD	RAINBIRD 1800-SAM-PRS POP-UP WITH MRP NOZZLE, 10 SERIES	4" POP-UP AT LAWNS; 6" POP-UP AT SHRUB AREAS
○	○	○	○	SPRAY HEAD	RAINBIRD 1800-SAM-PRS POP-UP WITH MRP NOZZLE, 12 SERIES	4" POP-UP AT LAWNS; 6" POP-UP AT SHRUB AREAS
○	○	○	○	SPRAY HEAD	RAINBIRD 1800-SAM-PRS POP-UP WITH MRP NOZZLE, 15 SERIES	4" POP-UP AT LAWNS; 6" POP-UP AT SHRUB AREAS
○	○	○	○	ROTORS	RAINBIRD 5000-MPR-25 (RED)	THROW RADIUS: 23' @ 25PSI
---	---	---	---	MAINLINE	CLASS 200 PVC	1 1/2"
---	---	---	---	LATERAL LINE	CLASS 200 PVC	SIZE PER PIPE SIZE CHART AND AS INDICATED ON PLAN
---	---	---	---	SLEEVE	CLASS 200 PVC	SIZE = 2 x LINE SIZE, 2" MIN
⊞	⊞	⊞	⊞	METER		NEW 3/4" METER - SEE CIVIL
⊞	⊞	⊞	⊞	BACKFLOW PREVENTION ASSEMBLY		
⊞	⊞	⊞	⊞	DOUBLE CHECK VALVE ASSEMBLY	FEBCO 850 DCVA WITH BALL VALVES	1" DCVA
⊞	⊞	⊞	⊞	WYE STRAINER	BRASS STRAINER WITH 80 MESH SCREEN. WATT'S OR EQUAL.	
⊞	⊞	⊞	⊞	QUICK COUPLER	RAINBIRD 33-DLRC	PROVIDE: 33DK KEY; SH-0 ELL; 2049 COVER KEY
⊞	⊞	⊞	⊞	CONTROLLER	RAINBIRD TBOS-II CONTROL MODULES	PROVIDE: (1) RAINBIRD TBOS-II FIELD TRANSMITTER
⊞	⊞	⊞	⊞	RAIN SENSOR	RAINBIRD RSD-BEX RAIN SENSOR	
⊞	⊞	⊞	⊞	REMOTE CONTROL VALVE ASSEMBLY	RAINBIRD PEB 1"	

IRRIGATION NOTES

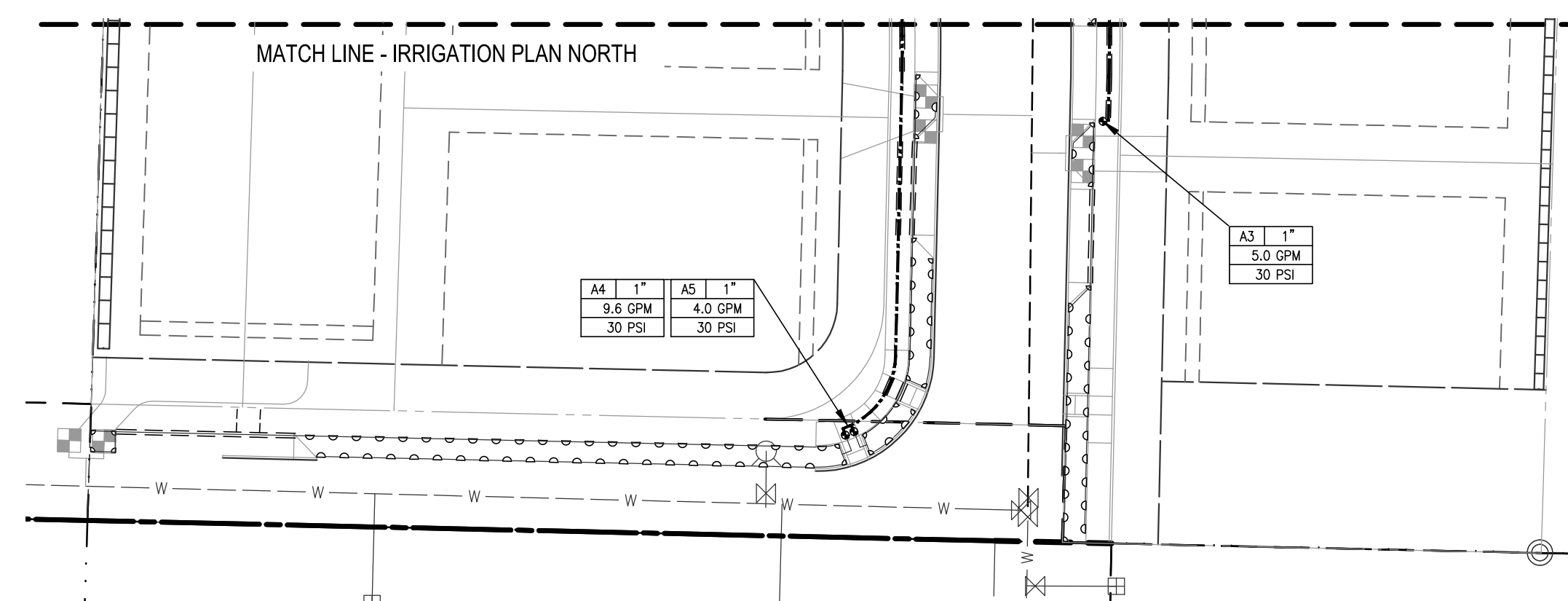
- PIPE, SLEEVE AND VALVE LAYOUT IS DIAGRAMMATIC FOR THE SAKE OF CLARITY. ROUTE ALL PIPES THROUGH PLANTING AREAS AND LOCATE ALL VALVE BOXES IN PLANTING AREAS. WHERE POSSIBLE ROUTE PIPING ADJACENT TO CURBS. AVOID ROUTING PIPING THROUGH THE CENTER OF PLANTING AREAS WHERE IT MIGHT CONFLICT WITH PLANT ROOTBALLS.
- ALL SLEEVES MUST BE STRAIGHT RUNS. EXTEND ALL SLEEVES 24" MINIMUM BEYOND EDGE OF PAVING OR CURB.
- PIPES MAY SHARE A COMMON TRENCH AS SHOWN ON THE DETAILS. MAINTAIN 6" CLEAR BETWEEN MAINLINES AND LATERALS. MAINTAIN 3" CLEAR BETWEEN LATERAL LINES IN A COMMON TRENCH. MAINTAIN REQUIRED BURY DEPTH AT ALL TIMES.
- STAKE OR PAINT PIPE AND VALVE LAYOUT AND OBTAIN LANDSCAPE ARCHITECTS APPROVAL PRIOR TO BEGINNING THE WORK.
- ALL IRRIGATION HEADS TO BE SPACED HEAD TO HEAD COVERAGE.
- VERIFY AVAILABLE WATER PRESSURE PRIOR TO CONSTRUCTION. NOTIFY LANDSCAPE ARCHITECT IF AVAILABLE STATIC PRESSURE AT METER IS LESS THAN 50 PSI.
- ADJUST ALL HEADS TO MINIMIZE OVERSPRAY ONTO PAVED AREAS AND ELIMINATE HEAD FOGGING.
- SEE CIVIL PLANS FOR ADDITIONAL INFORMATION AND LOCATIONS OF UNDERGROUND UTILITIES. PROVIDE UTILITY LOCATE PRIOR TO BEGINNING ANY EXCAVATION.
- SEE SHEET L2.02 FOR IRRIGATION DETAILS.

ZONE CHART -

ZONE #	GPM	VALVE SIZE
SPRAY A1	7.4	1 INCH
A2	7.7	1 INCH
A3	5	1 INCH
A4	9.6	1 INCH
A5	4	1 INCH
A6	4.8	1 INCH
A7	6.2	1 INCH
A8	4.6	1 INCH
A9A	16.64	1 INCH
A9B	16.65	1 INCH
A10	5.8	1 INCH
A11	5.65	1 INCH
A12	7.52	1 INCH
A13	14.93	1 INCH
A14A	9.47	1 INCH
A14B	9.48	1 INCH
A15	15.24	1 INCH
ROTOR R1	19.06	1 INCH
R2	19.66	1 INCH
R3	19.56	1 INCH
R4	19.66	1 INCH
R5	19.06	1 INCH
R6	22.44	1 INCH

PIPE SIZING CHART -
CL 200 LATERALS

GALLONS / MIN.	PIPE SIZE
0 - 10	3/4 INCH
10 - 16	1 INCH
16 - 26	1-1/4 INCH
26 - 35	1-1/2 INCH
35 - 55	2 INCH



2 IRRIGATION PLAN - SOUTH
SCALE: 1" = 30'-0"

DATE	REVISION	BY	CHK. NO.
7/21/14	PRELIMINARY PLAT SUBMITTAL		
9/18/14	PLAT SUBMITTAL		
12/16/14	PREP COMMENTS		
5/18/15	RESUBMITTAL		



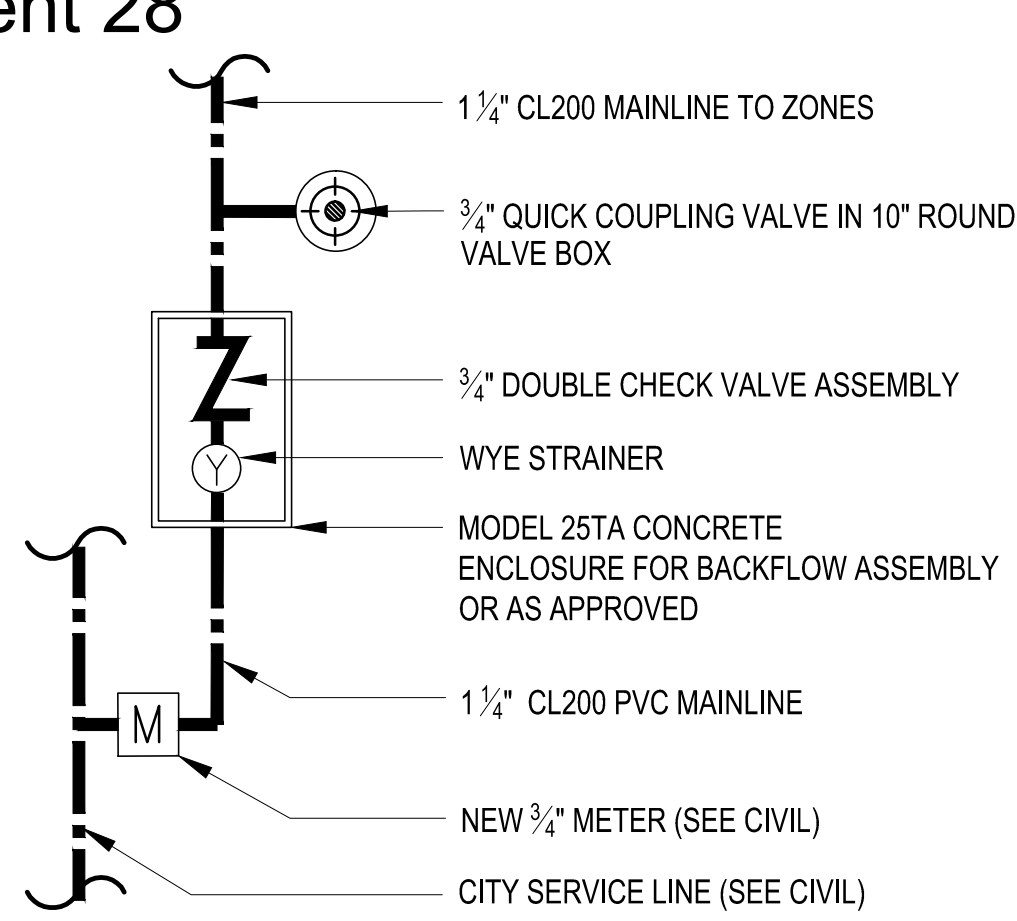
EDGEWOOD EAST
REDMOND, WA

CLIENT
QUADRANT HOMES
QUADRANT HOMES, INC.
14725 SE 36TH STREET
SUITE #100
PO BOX 130
BELLEVUE, WA 98009

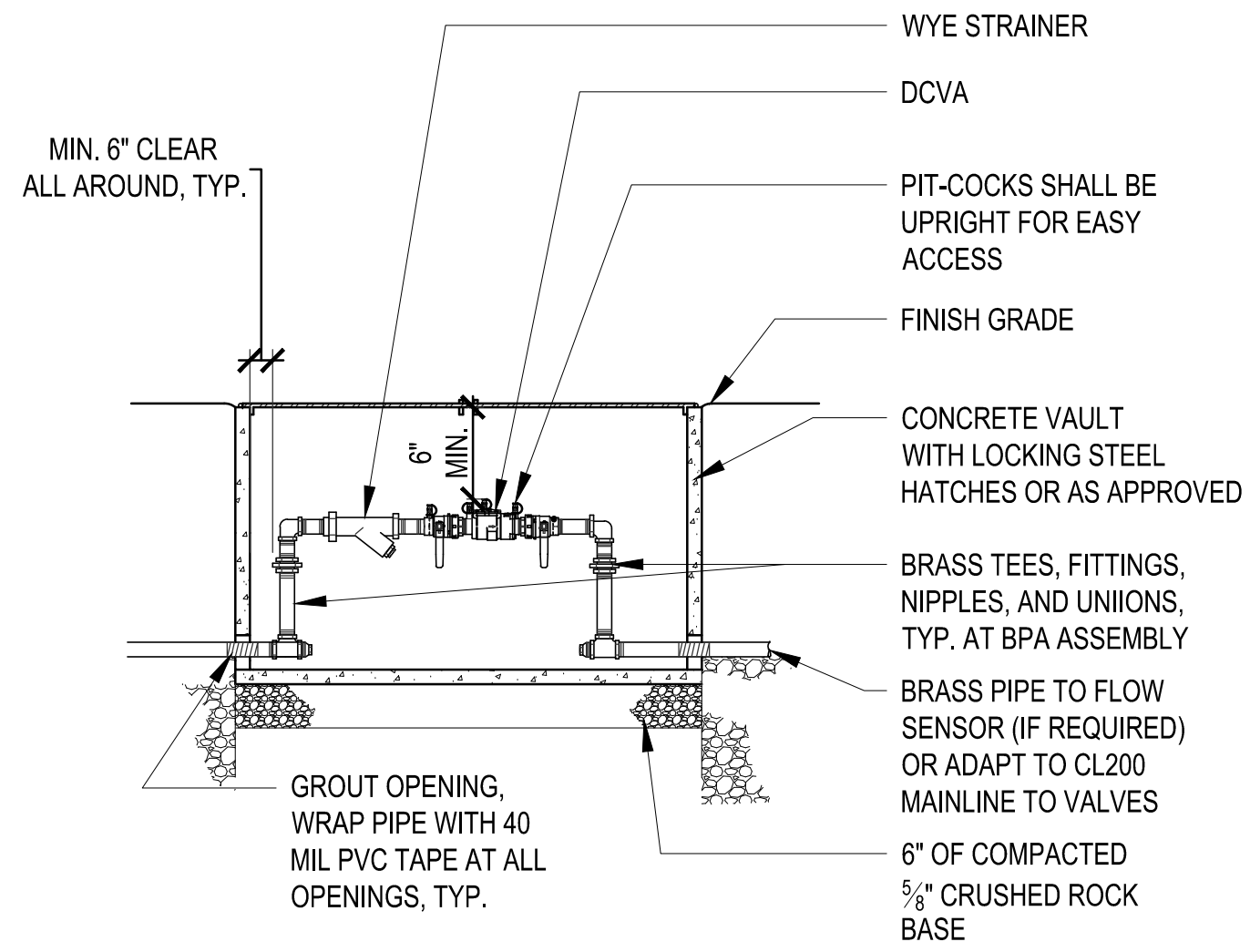


PROJECT NO.
SHEET TITLE
DRAWING **L2.01**
SHEET **5** OF **6**

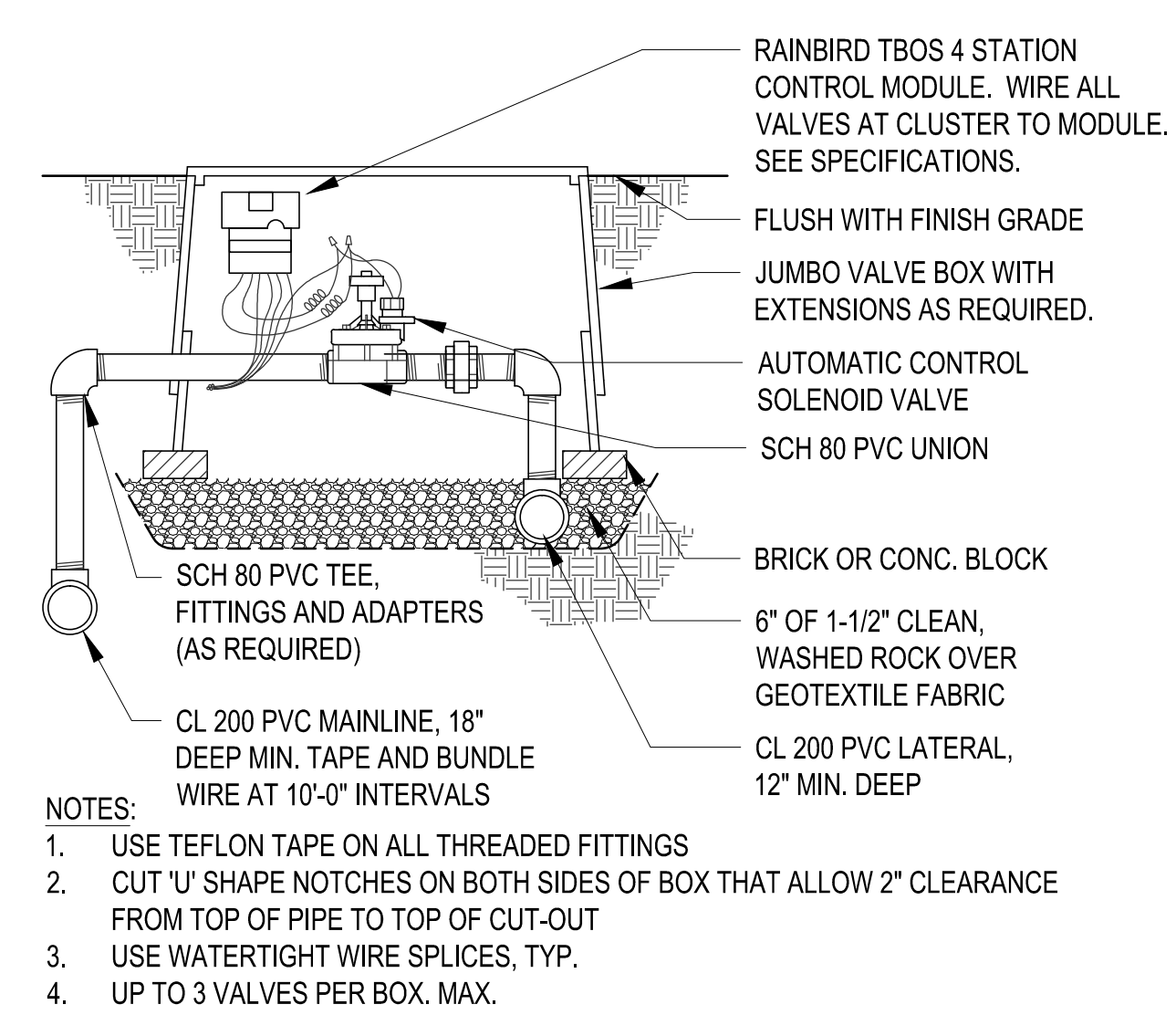
Attachment 28



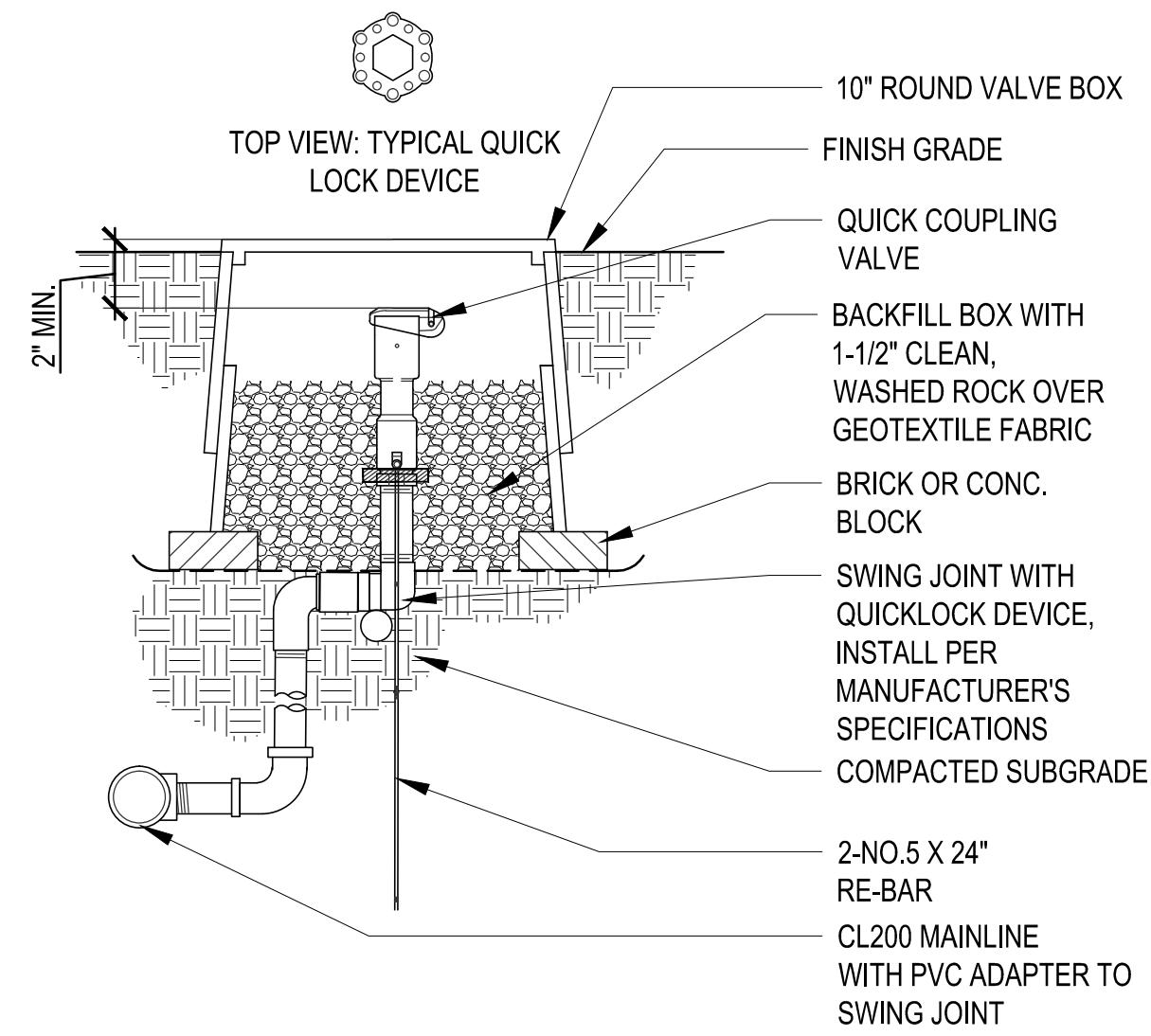
1 POINT OF CONNECTION DIAGRAM
SCALE: 3/4"=1'-0"



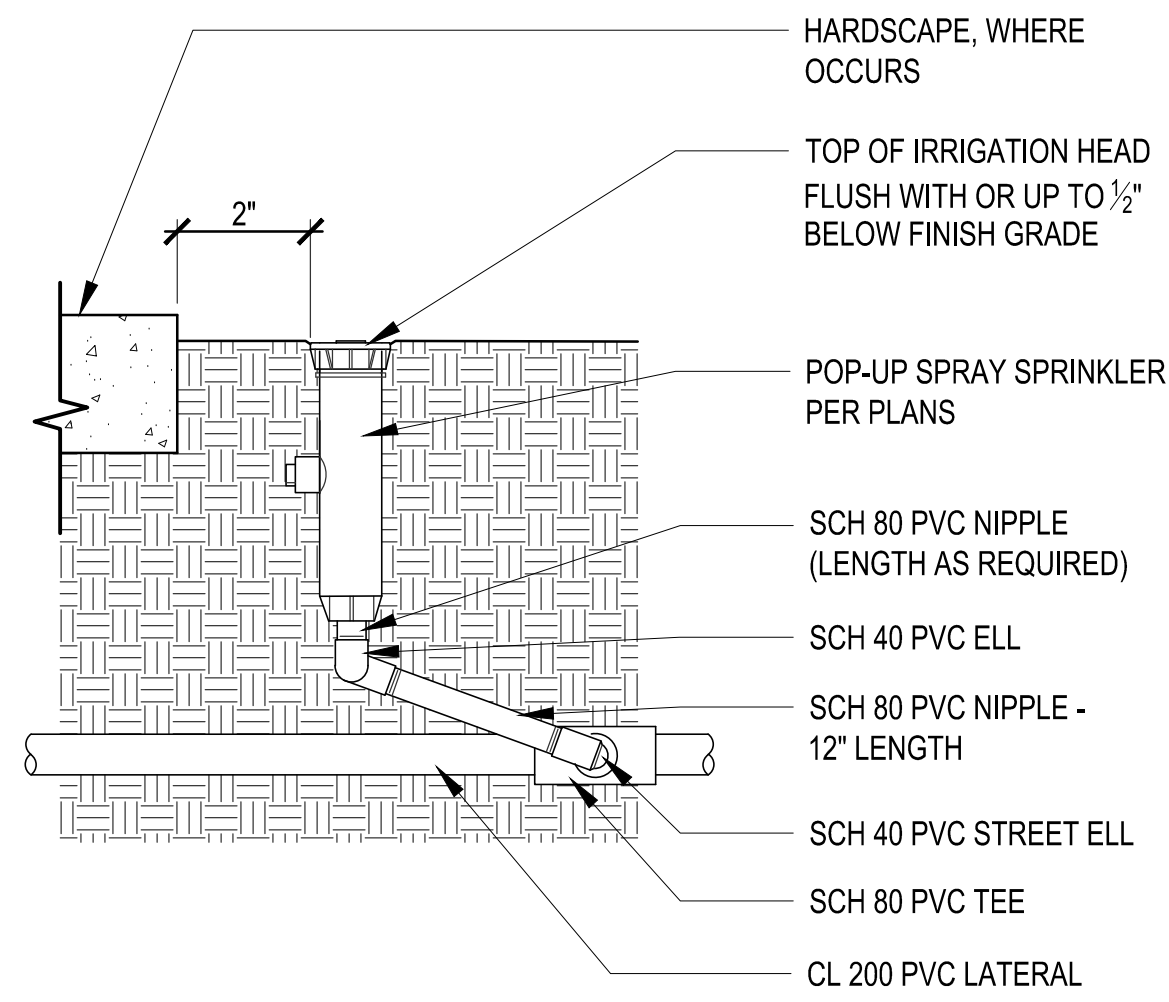
2 BACKFLOW PREVENTION ASSEMBLY
SCALE: 1/2"=1'-0"



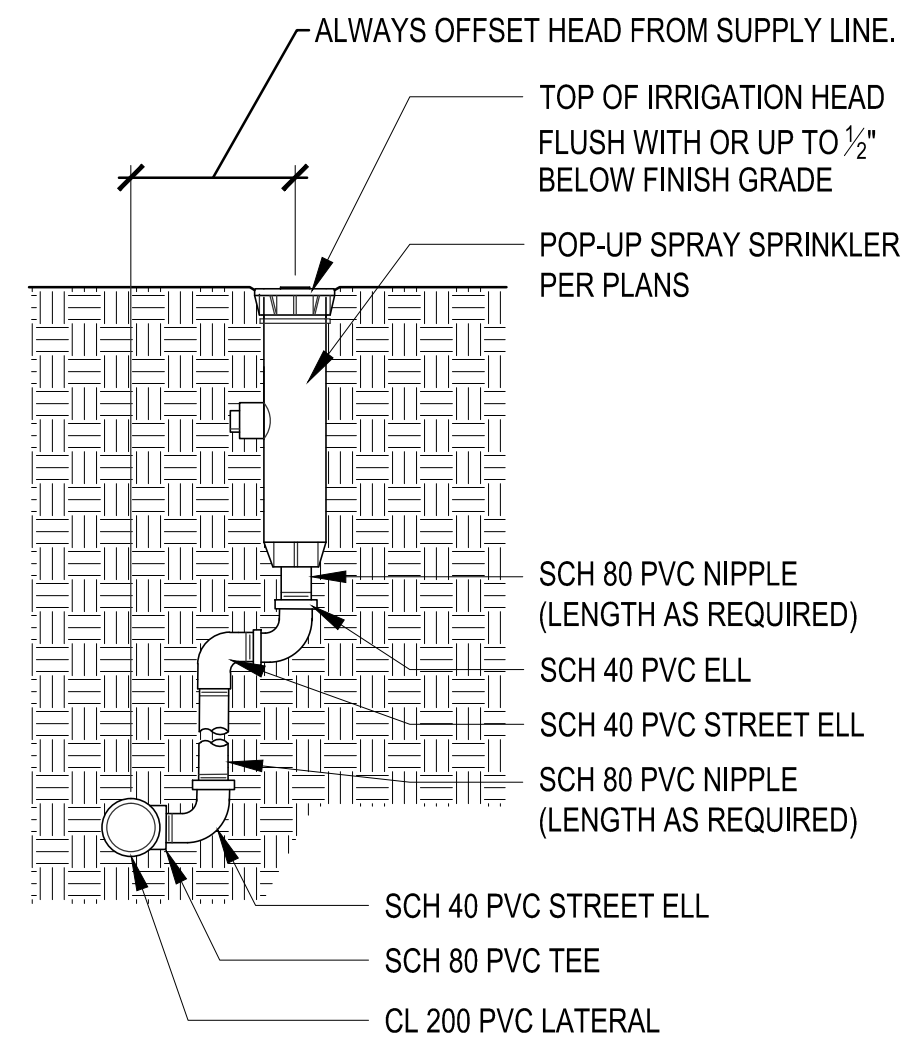
3 REMOTE CONTROL VALVE WITH TBOS-II CONTROL MODULE
SCALE: 3/4"=1'-0"



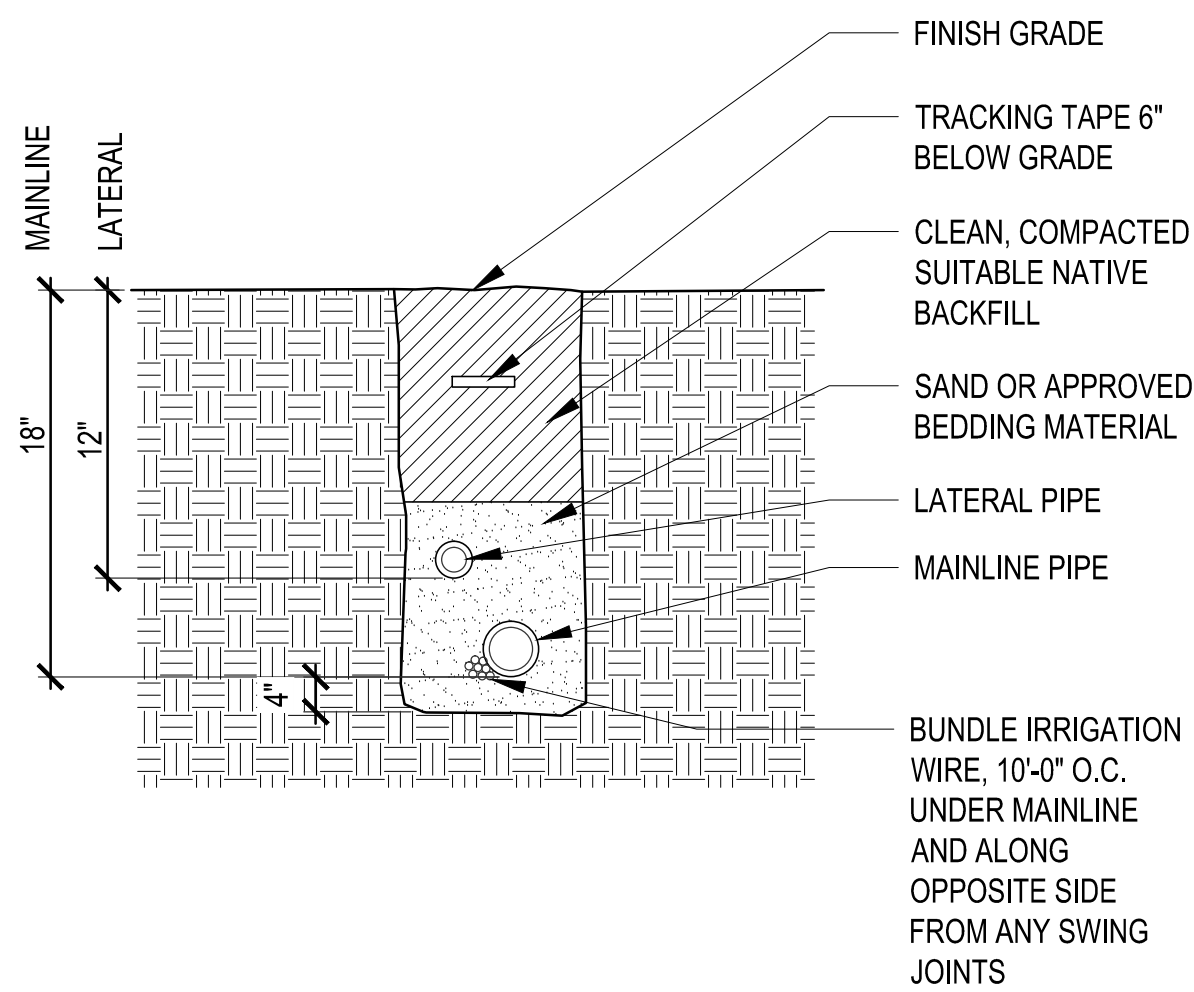
4 QUICK COUPLER VALVE
SCALE: 3/4"=1'-0"



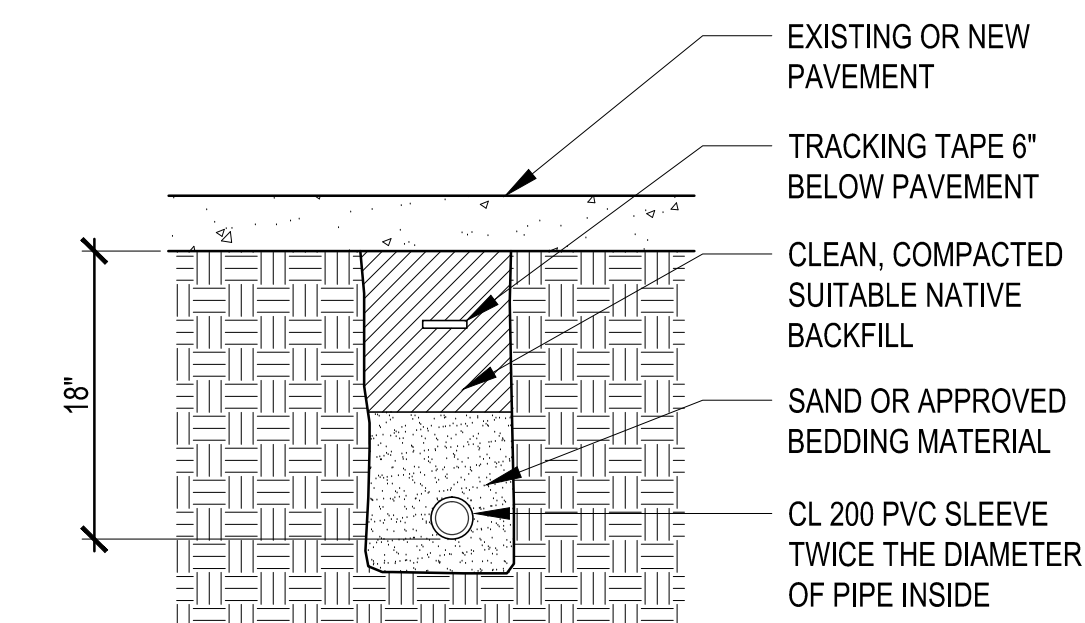
5 POP-UP SPRAY HEAD
SCALE: 3/4"=1'-0"



6 ROTOR POP-UP SPRINKLER WITH SWING JOINT
SCALE: 3/4"=1'-0"

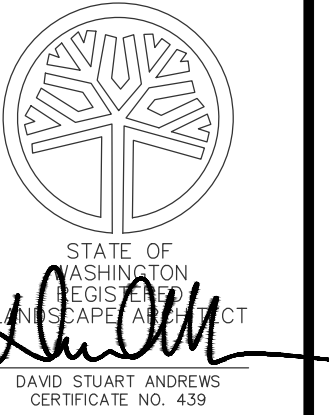


7 IRRIGATION TRENCH
SCALE: 3/4"=1'-0"



8 IRRIGATION TRENCH UNDER PAVING
SCALE: 3/4"=1'-0"

DATE	REVISION	BY	CHK. NO.
7/21/14	PRELIMINARY PLAT SUBMITTAL		
9/18/14	PLAT SUBMITTAL		
12/16/14	PREP COMMENTS		
5/18/15	RESUBMITTAL		



EDGEWOOD EAST
REDMOND, WA

CLIENT
QUADRANT HOMES
QUADRANT HOMES, INC.
14725 SE 36TH STREET
SUITE #100
PO BOX 130
BELLEVUE, WA 98009



PROJECT NO.
SHEET TITLE
DRAWING
L2.02
SHEET 6 OF 6